

Figure 9 gives a visual comparison of the < 10 mm compost fraction of control and Kratiste climbing pole compost at the end of the test (after 12 weeks). No suspicion of visual contamination can be seen at the end of the test. The final interpretation is to be assessed by the certification body as the presence of visual contamination will render this test result uncompliant with the standard/certification scheme.

Table 6. Overview of the visual observations of Kratiste climbing pole, cut into 60 pieces, during the composting process

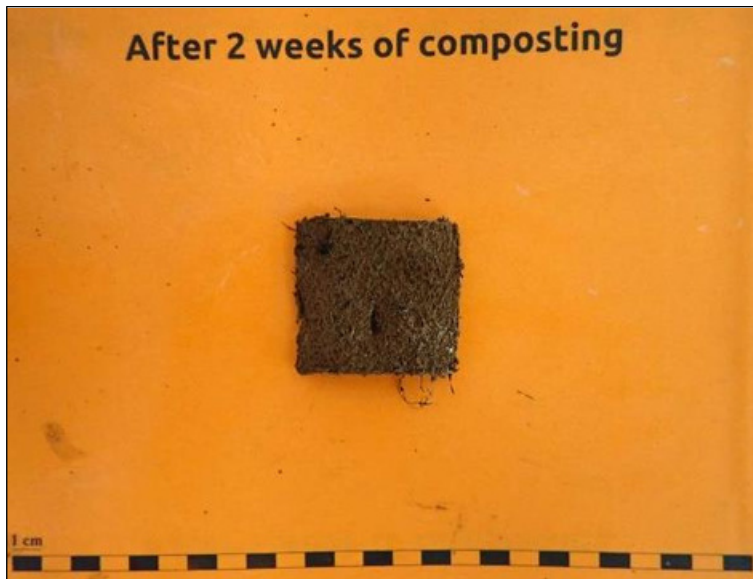
Weeks	Picture	Visual perceptions
At start	 <p style="text-align: center;">Sample at start</p>	
1		<p>Test item was abundantly present</p> <p>Remained mostly intact</p> <p>Turned fragile</p> <p>Tears already noticed in some of the test pieces</p>

Weeks

Picture

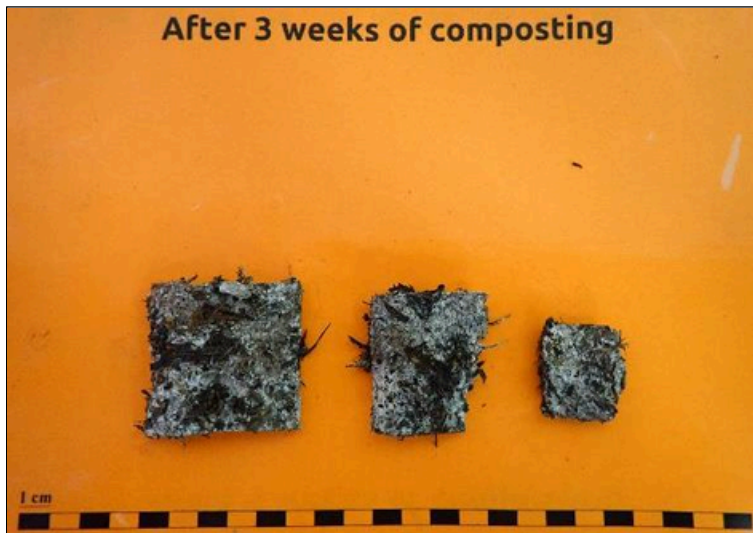
Visual perceptions

2



Test item turned fragile
Remained mostly intact

3



Tears and holes were noticed in the majority of the test item pieces
Some test item pieces remained intact
Fungal growth observed

4



Test item had fallen apart into pieces of variable size
Some test item pieces remained intact

Weeks

Picture

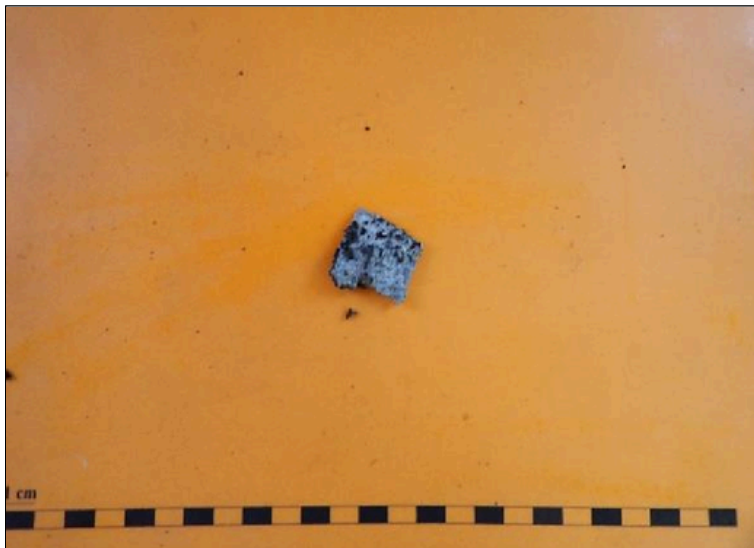
Visual perceptions

6



Test item had completely fallen apart into pieces of variable size

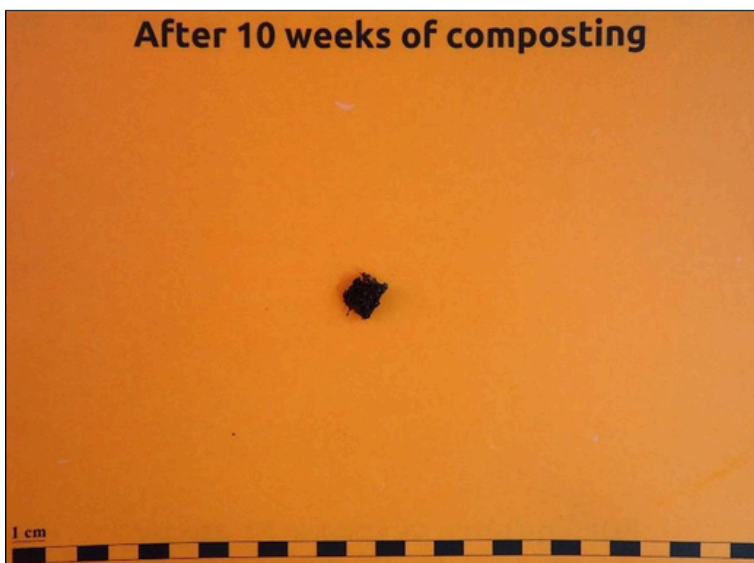
8



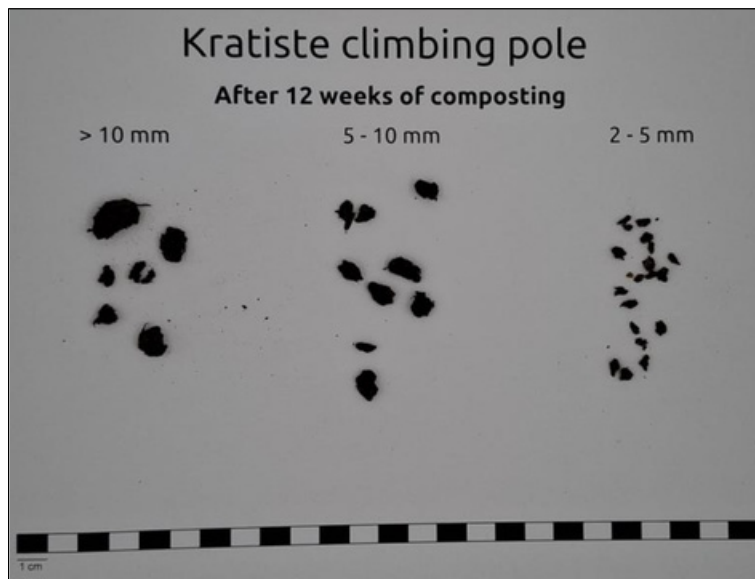
Test material had further reduced in size and presence

Pieces with a maximum size of 2.5 cm x 3 cm were retrieved

10



Only a few small pieces remained



12

Only a few small pieces remained

